

How Jamf Connect Syncs Your Mac Password After a Password Change

Jamf Connect is a tool on Macs set up in 2021 that allows for on-demand account creation and keeps your Mac's local password in sync with your App State password. For more information about Jamf Connect, see the [Jamf Connect guide](#).

This guide will show you the two ways Jamf Connect helps to keep your Mac's password in sync after you change your password on [Password Manager](#). Both options will keep your password in sync, but you might see one or the other depending on when you last changed your password.

Jamf Connect Syncing During Login

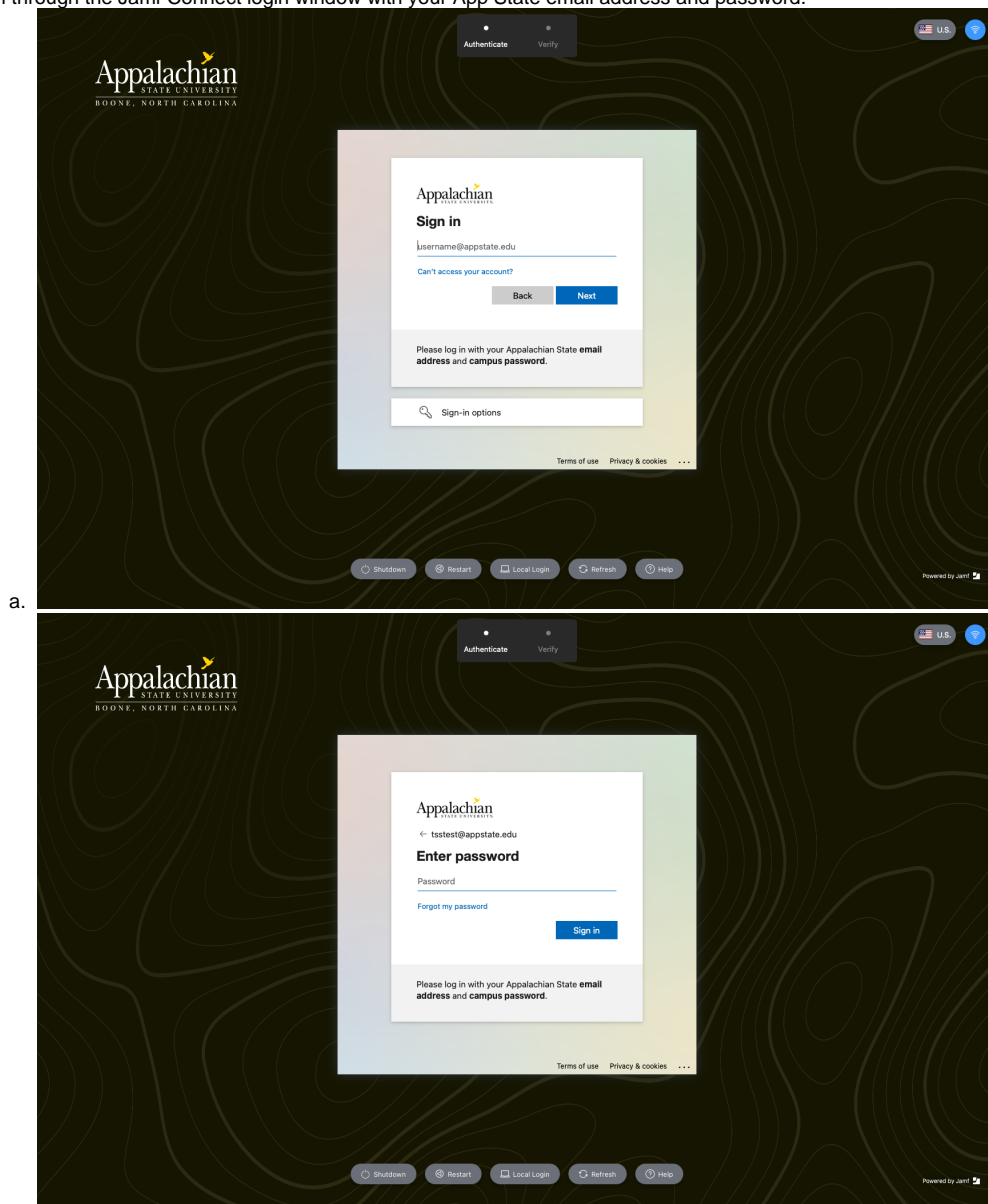
If you changed your App State password while you were logged out of your Mac and you attempt to log back in through the Jamf Connect login window, you will see the following prompts to sync your passwords:



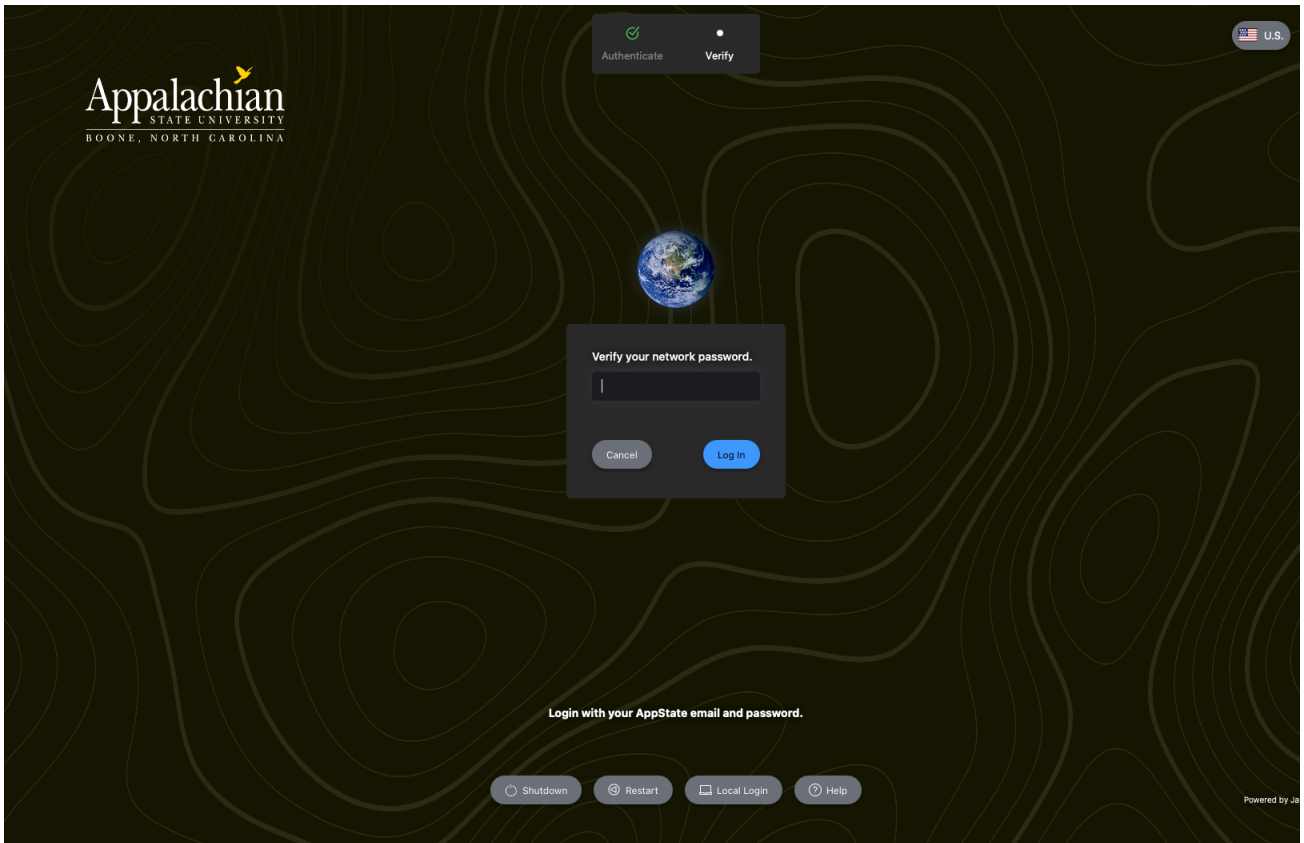
Note:

If you have FileVault enabled for disk encryption, you will not see the Jamf Connect login window unless you log out.

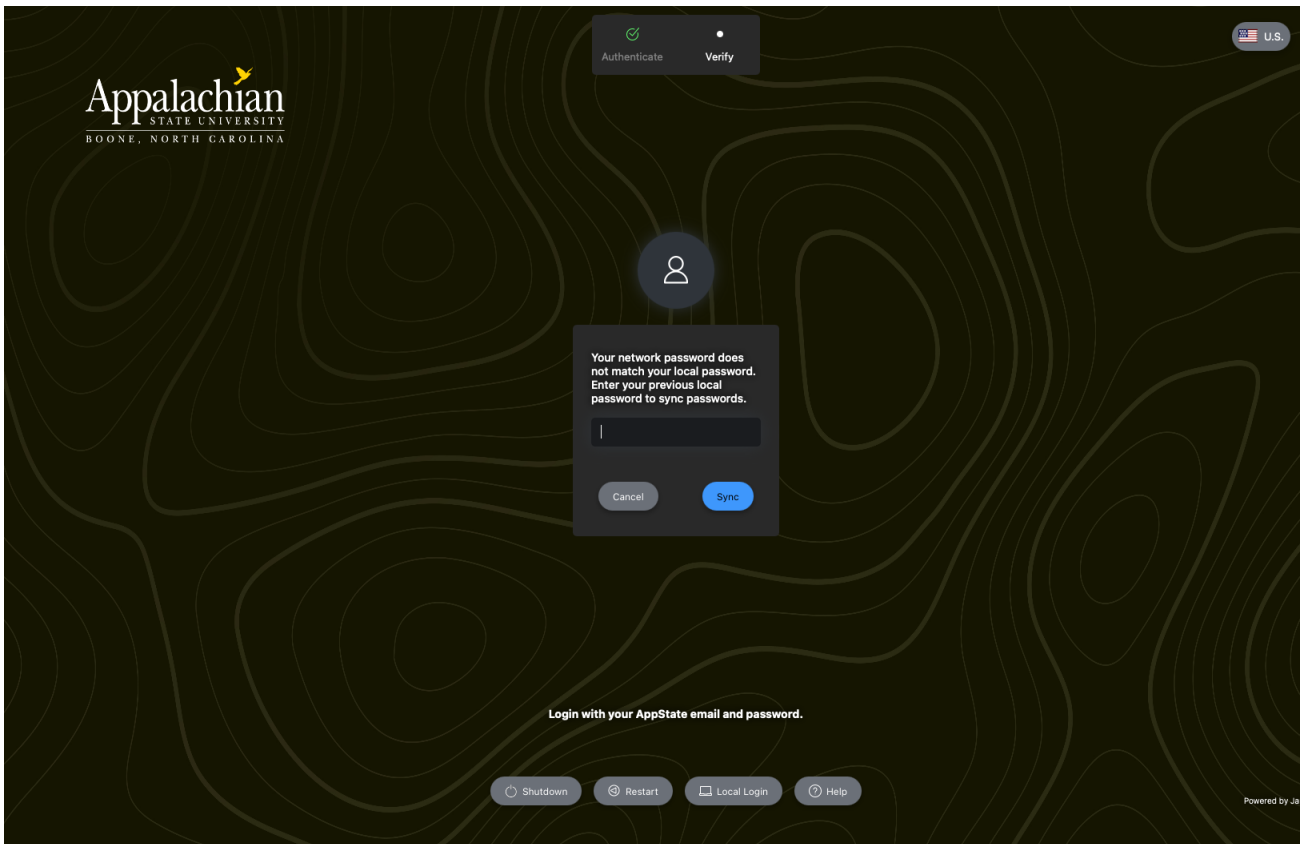
1. Login through the Jamf Connect login window with your App State email address and password.



2. You will be asked to verify your password.



1. Jamf Connect will notify you that your passwords are out of sync. Enter your **previous** App State password (this is the password you used on your Mac **before** the password change)

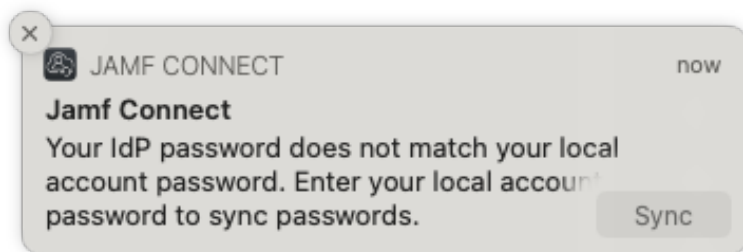


1. Once you get logged in, your Mac's password will now be in sync with your updated App State password.

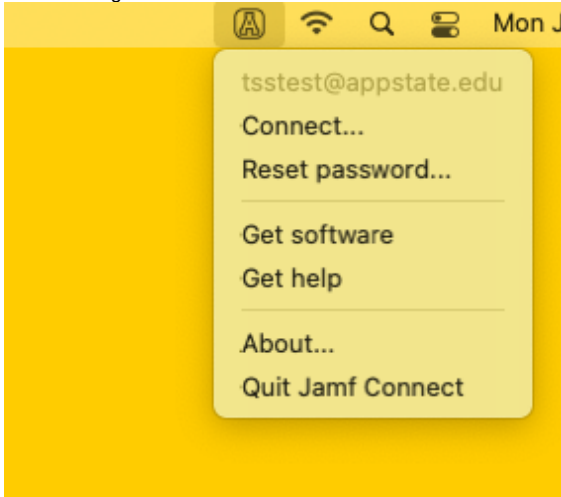
Jamf Connect Syncing While Already Logged In

If you are already logged into your Mac and you updated your App State password, Jamf Connect will periodically verify that your password is still valid and you will see the following prompts to sync your password:

1. When Jamf Connect identifies that your passwords are out of sync on a periodic check, you will get the following notification. You can click **Sync**.

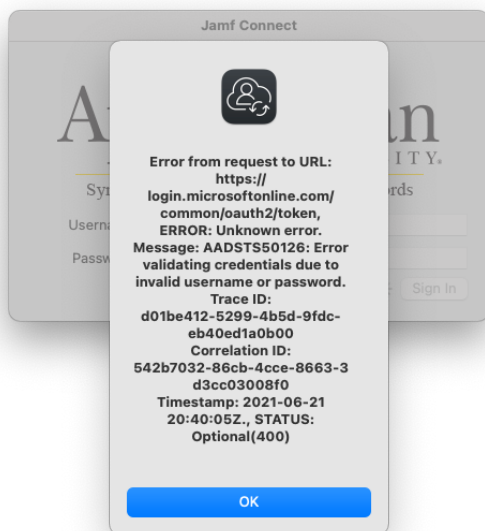


2. If you do not want to wait for the notification, you can initiate the password sync manually by clicking on the Jamf Connect icon in the menu bar and selecting **Connect...**



Note:

You may see an error when Jamf Connect attempts to use your old password, this is normal and you can click OK.

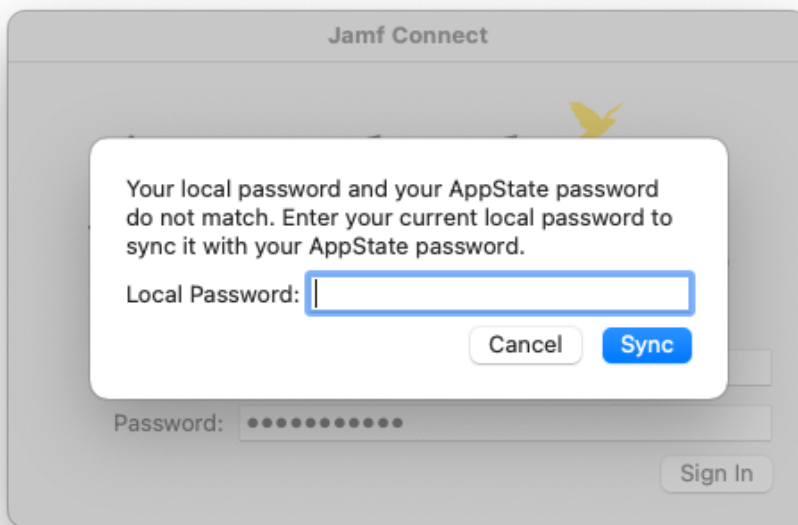


3. At the Jamf Connect Sync window, sign in with your App State email address and use your new App State password.



The image shows a 'Jamf Connect' window for Appalachian State University. The title bar says 'Jamf Connect'. The main header features the university's name 'Appalachian STATE UNIVERSITY' with a yellow bird logo above the 'i' in 'Appalachian'. Below the header, it says 'Syncing Your AppState and Mac Passwords'. There are two input fields: 'Email Address:' and 'Password:'. A blue 'Sign In' button is located at the bottom right.

4. Jamf Connect will notify you that your passwords are out of sync. Enter your previous App State password (this is the password you used on your Mac before the password change).



The image shows a 'Jamf Connect' window with a modal dialog box in the center. The dialog box contains the text: 'Your local password and your AppState password do not match. Enter your current local password to sync it with your AppState password.' Below this text is a 'Local Password:' input field. At the bottom of the dialog are 'Cancel' and 'Sync' buttons. In the background, the main window is dimmed, showing a 'Password:' field with masked characters and a 'Sign In' button.

1. Select **Sync** and your Mac's password will now be in sync with your updated App State password.

Related Articles

- [Apple](#)
- [ARM Architecture - macOS Update Notification Procedure](#)
- [Fix ASU Wifi after Password Change on macOS](#)
- [How to Configure ASU Wireless on macOS](#)
- [How to find System Information on macOS](#)
- [How to Login to Jamf Connect](#)
- [How to Map a uStor Folder on macOS](#)
- [How to Update 3rd-Party Software on macOS](#)
- [How to Update Software on macOS](#)

- [How to Upgrade macOS](#)
- [Mac Zero-Touch Setup Guide](#)
- [Nudge Notification for macOS](#)
- [Print Duplex/Double Sided on a Mac](#)
- [Requesting App Licenses for Managed Apple Devices](#)
- [Reset the Keychain using Self Service on macOS](#)
- [Save a File from Microsoft Word to a Google Shared Drive](#)
- [Saving a Document as a PDF on Mac](#)
- [Setting up Google Apps in Apple Mail, Contacts & Calendars on Mac OS 10.11](#)
- [Types of Updates on macOS](#)
- [Updating AppStore Applications in Self Service on Mac](#)
- [Using Self Service on a Mac](#)
- [What is FileVault](#)
- [What is Jamf Connect](#)
- [Windows and macOS System Updates and Patches](#)

[Search Knowledge Base](#)

[Submit a Service Request](#)

We value your feedback! Click [HERE](#) to suggest updates to an existing article, request a new article, or submit an idea.