

Remotely Connect to a Campus Computer from macOS into Windows OS

Instructions for connecting to a campus computer from an off-campus location when the computer on campus has a Windows operating system and the computer off campus has a MAC operating system.

Note:

You must be connected with [AnyConnect](#) to make this connection.

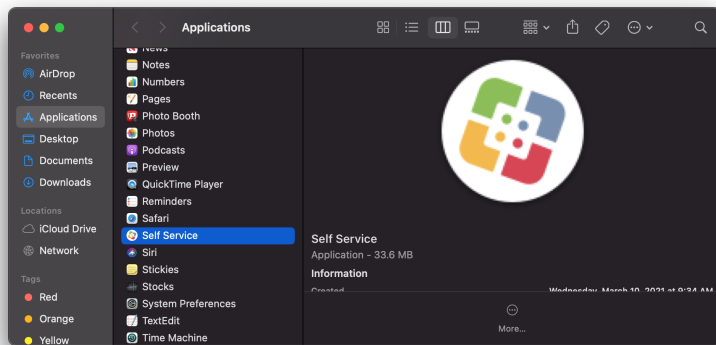
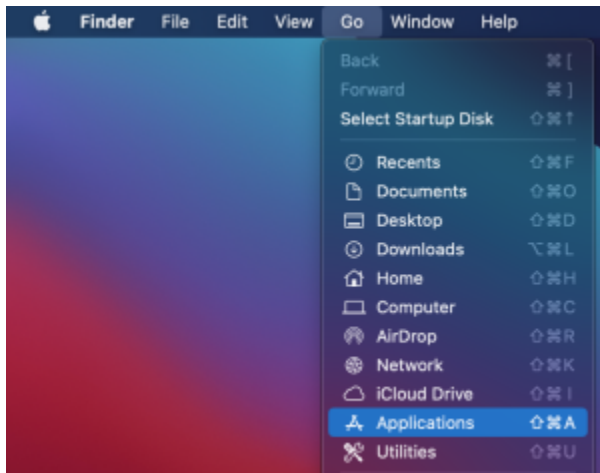
Configure a Windows campus computer to accept incoming connections:

Your browser does not support the HTML5 video element

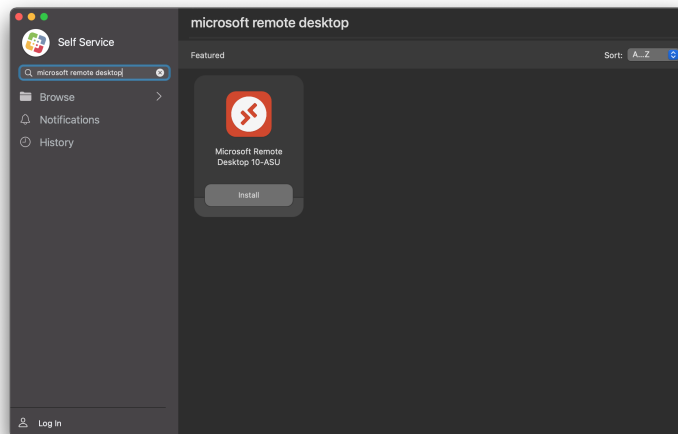
- Right click the Admin By Request icon in the Systems Tray and select **Tools > System properties**.
 - Enter "Remote desktop" in the user account control pop up box.
- Navigate to the **Remote** tab
- Select the **Allow remote connections to this computer** check box, then select the **Select users...** button
- Click **add**, then enter the username of the individual who needs to connect to the computer, then select **check names**
- Click **OK**
 - Make sure the username displays in the remote desktop users box
- Click **OK**
- Click **Apply**, then **OK**
- Retrieve the computer's IP address
 - Click the **Start** button
 - Type **CMD** and press **Enter**
 - In the command prompt that appears, type **ipconfig**
 - Look for the **IPv4 Address** entry and write down the IP address

To connect to a campus computer from off-campus

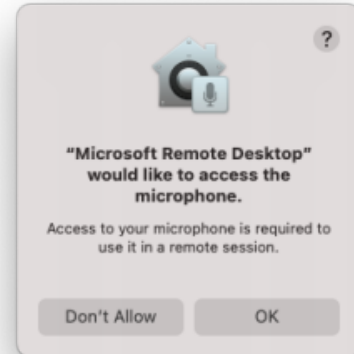
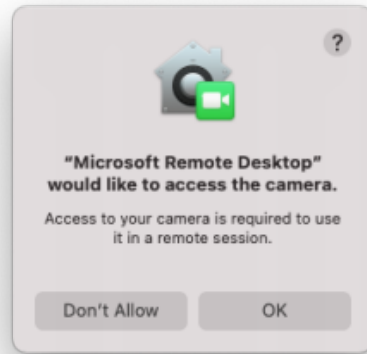
- In the menu Bar, click on **Go**, then **Applications** to open Self Service.



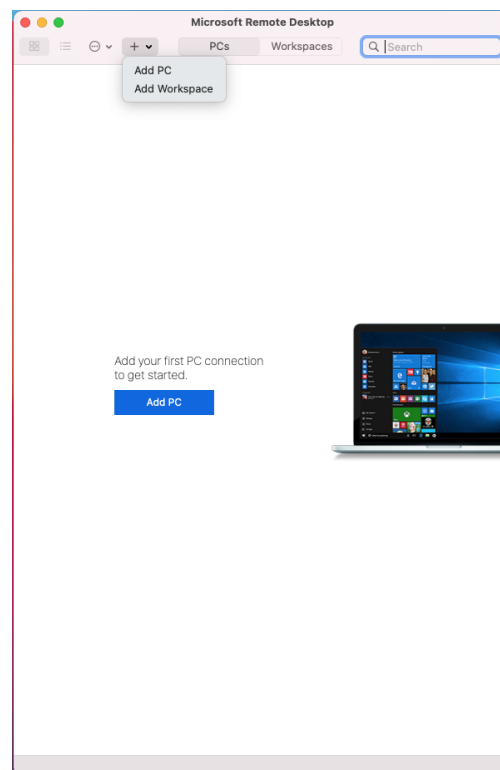
- In Self Service, search at the top left for **Microsoft Remote Desktop**.



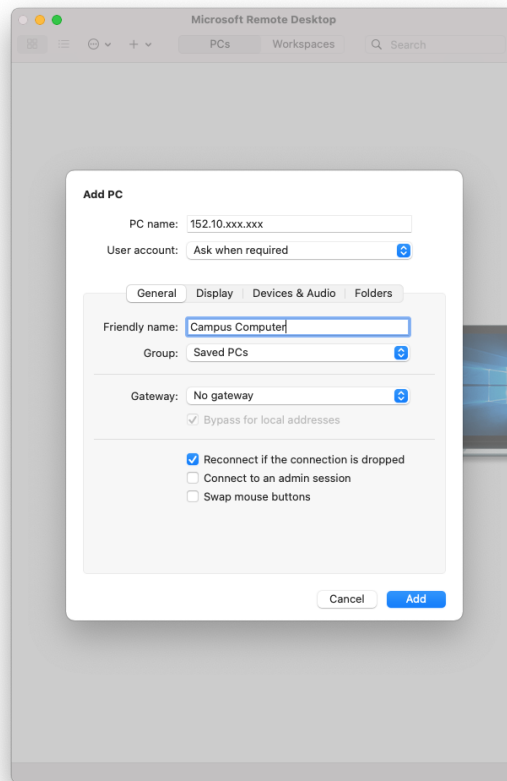
- Within Self Service, install and open **Microsoft Remote Desktop**. Follow the installation instructions on your screen and allow permissions when prompted:



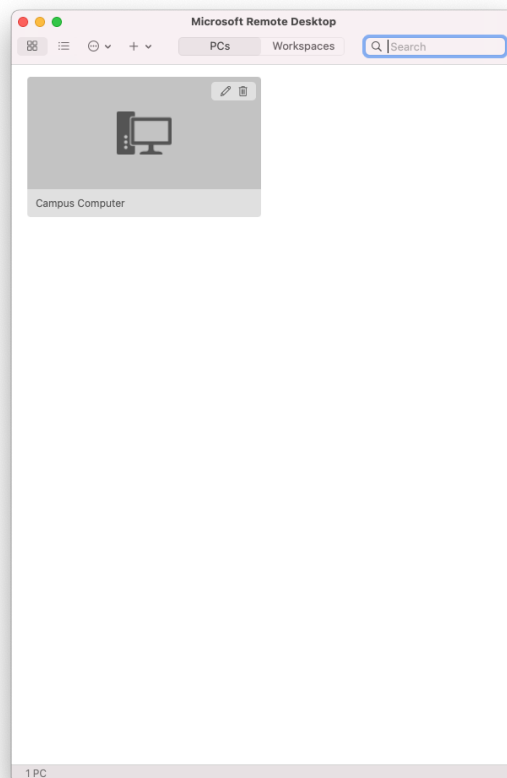
- Click the **+** button and from the drop-down menu click **Add PC**.



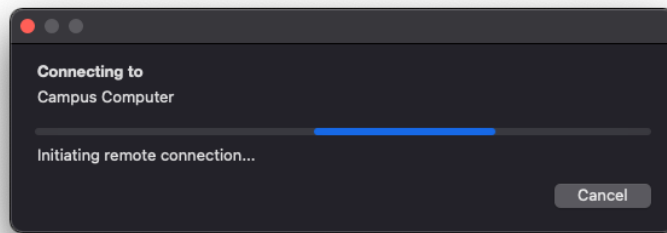
- In the **PC name** field, enter the IP address of the computer you wish to connect to. Give the computer an identifying friendly name.



- After clicking **Add**, your computer will show in the **PCs** space.



- To initiate a connection, double-click on your PCs name tile.

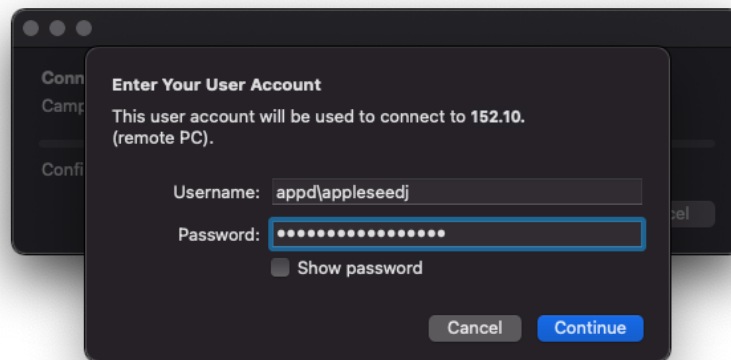


- In the **Username** field, type **appd\<your username>** and then type your University password credentials.

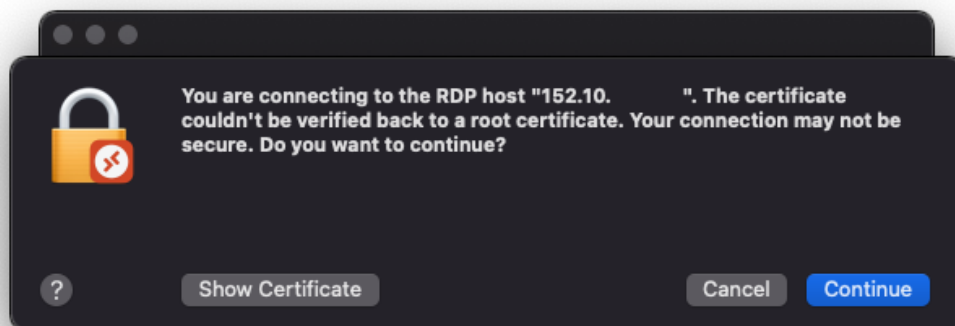


Note:

Do not enter @appstate.edu in the **User name** field and do not include brackets.



- If this is your first connection, you will need to accept a security warning. Make sure to only agree to this if you're connecting to a server you trust. Click **Continue** and the remote connection will complete and launch.



Options

- [Remotely Connect to a Campus Computer from macOS into macOS](#)
- [Remotely Connect to a Campus Computer from macOS into Windows OS](#)
- [Remotely Connect to a Campus Computer from Windows OS into macOS](#)
- [Remotely Connect to a Campus Computer from Windows OS into Windows OS](#)

[Search Knowledge Base](#)

[Submit a Service Request](#)