

Respondus LockDown Browser

What is Respondus Lockdown Browser?

Respondus is a third-party application used for quizzes and exams in AsULearn. While using Respondus, users will be unable to print, copy, visit other websites, or access other applications as determined by the student(s) and teacher. In some cases, the teacher may use Respondus Monitor to record your activity (see below).

It is important that if you need immediate assistance, like attempting a quiz over the weekend and it is not working, you can contact Respondus directly and follow the ticket process for [Respondus Technical Support](#).

Getting Started

1. Close all programs, such as Zoom.
2. Log in to AsULearn with a regular browser (preferably Chrome), select the course, and navigate to the quiz.
3. If Lockdown Browser has not been previously installed, you will be prompted to download and install the browser.

Respondus LockDown Browser is required for this exam.

[Download LockDown Browser](#) | [Check your LockDown Browser Setup](#)

Launch LockDown Browser

Back to the course

Respondus[®]
Assessment Tools for Learning Systems

LockDown Browser

OVERVIEW



This brief video explains the basic features of LockDown Browser and why it's used at your institution.

VERSION



Version: 2.1.0.07
Your system: macOS
Download size: 111.0 MB
System requirements

Do you need the Windows version?

INSTALL

Install LockDown Browser for:
Appalachian State University

INSTALL NOW

Note: Your antivirus software may allow you to install software.
By clicking the "Install Now" button, you acknowledge that you have read and agree to the Respondus Inc. License Agreement

Copyright © 2023 Respondus, Inc. All rights reserved.
Privacy & Cookies

Click to Install

Note: Downloading varies between Mac (.dmg) and Windows (.exe) machines, but it will behave no differently than any other application you have downloaded in the past.

4. Return to the quiz and open it to launch Lockdown Browser.

IMPORTANT Note: Once a quiz has been started with Lockdown Browser, you cannot exit until the quiz has been submitted for grading.

5. If prompted to close a blocked program (e.g. screen capture, instant messaging), choose **Yes**.

Getting Started

Orientation From Respondus Lockdown and Monitor

Respondus Monitor

Although a camera and sound structure (speakers/microphones) are basic peripherals in most personal computing devices produced in the past ten years, please make sure that the computer you use has these items. The other environmental conditions to keep in mind is having a solid broadband internet connection.

Now that you have the hardware and network conditions in place, if you are taking a quiz or exam that is safe guarded by Respondus Monitor you will see this:

Respondus LockDown Browser with Respondus Monitor (webcam) is required for this exam.

[Download LockDown Browser](#) | [Check your LockDown Browser Setup](#)

Launch LockDown Browser

Back to the course

Respondus Monitor

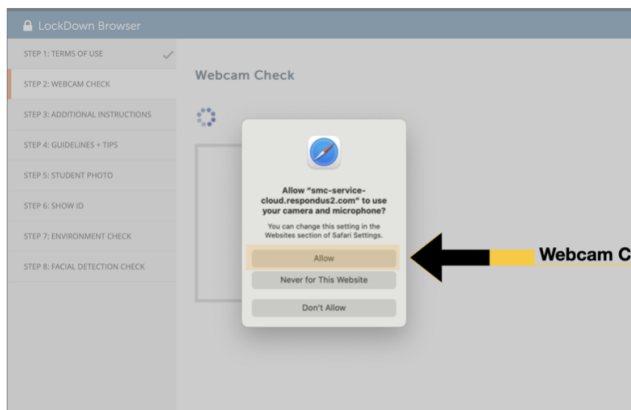
This option is used as a substitute for a non-proctored quiz or exam, but gives you the flexibility to do this from outside the traditional classroom or computer lab setting. Therefore Respondus Monitor will use your computer's webcam and microphone in order to record you during the duration of your quiz or exam.

If you have any issues with the nature of any of the Respondus Monitor verification or monitoring protocols, please discuss this with your teacher.

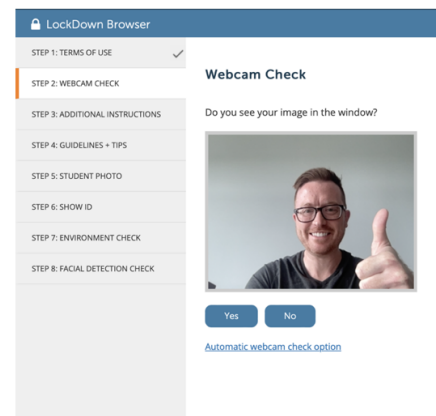
What follows are settings the teacher can active at their discretion, so this is basically the main points to keep in mind before taking a Respondus Monitor quiz or exam:

STEP 1: Agree to the Term of Use

STEP 1.2: Webcam Check



Webcam Check Allow



STEP 2: Read Additional Instructions

LockDown Browser

STEP 1 TERMS OF USE ✓

STEP 1 WEBCAM CHECK ✓

STEP 2 ADDITIONAL INSTRUCTIONS ✓

STEP 3 GUIDELINES + TIPS

STEP 4 STUDENT PHOTO


STEP 5 SHOW ID

STEP 6 ENVIRONMENT CHECK


STEP 7 FACIAL DETECTION CHECK

STEP 9 BEGIN EXAM

3 >> Place your computer or device on a flat, hard surface such as a table or desk, and sit in a chair during the exam...



Do NOT place the computer on your lap, a bed, or the floor. Do NOT lay or sit on a bed/couch/floor.



If using a built-in webcam, avoid tilting the screen after the webcam setup is complete.

Next

LockDown Browser

STEP 1 TERMS OF USE ✓

STEP 1 WEBCAM CHECK ✓

STEP 2 ADDITIONAL INSTRUCTIONS ✓

STEP 3 GUIDELINES + TIPS

STEP 4 STUDENT PHOTO


STEP 5 SHOW ID

STEP 6 ENVIRONMENT CHECK


STEP 7 FACIAL DETECTION CHECK

STEP 9 BEGIN EXAM

4 >> To improve the quality of your webcam video (and reduce flags), remember the following...



Don't wear sunglasses or hats with brims. Also, be sure to dress appropriately, as if you were in the classroom.



Take the exam in a well-lit room and avoid backlighting, such as sitting with your back to a window.

Next

LockDown Browser

STEP 1 TERMS OF USE ✓

STEP 1 WEBCAM CHECK ✓

STEP 2 ADDITIONAL INSTRUCTIONS ✓

STEP 3 GUIDELINES + TIPS

STEP 4 STUDENT PHOTO


STEP 5 SHOW ID

STEP 6 ENVIRONMENT CHECK


STEP 7 FACIAL DETECTION CHECK

STEP 9 BEGIN EXAM

5 >> Other things to remember...



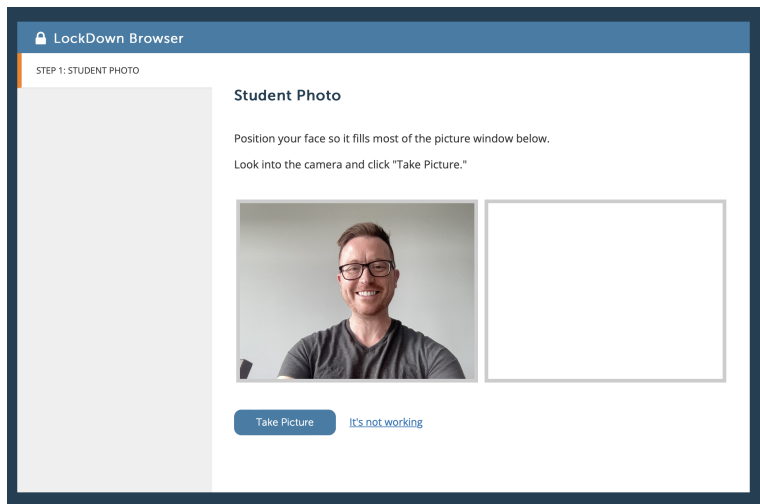
Unless instructed otherwise, turn off all other devices (e.g. phones, tablets, second computers) and place them outside of your reach. Clear your workspace of all other materials.



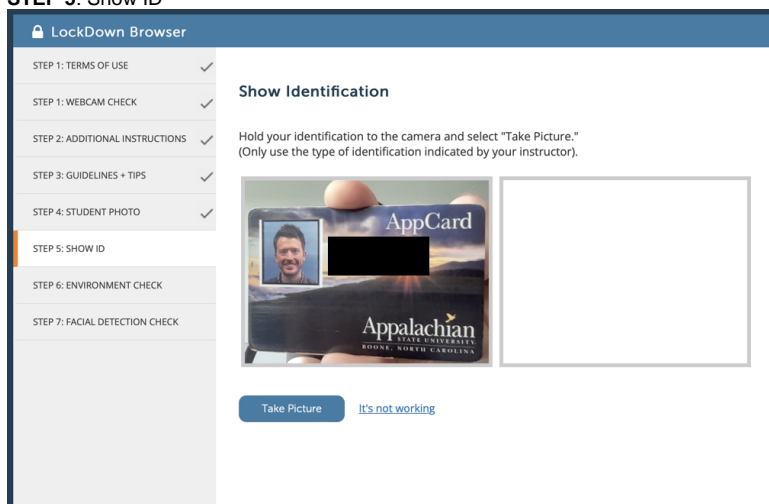
LockDown Browser prevents you from accessing other websites or applications. You will be unable to exit until the exam is completed and submitted.

Continue

STEP 4: Student Photo



STEP 5: Show ID



STEP 6: Environmental Check

STEP 7: Facial Detection Check

The quiz will begin after the startup sequence is complete. You cannot exit Lockdown Browser until the quiz is submitted for grading.

Again, these steps highlight the startup sequence and the options listed depend on the settings chosen by your teacher. Follow the instructions and note your progress along the left side of the screen.

If you encounter a problem, select the **"It's not working"** link for troubleshooting tips and access to 24/7 live chat help.



Problems?

If you encounter problems downloading, installing, or taking an assessment with Lockdown Browser, you can do one of the follow:

- 1) Contact Respondus directly and follow the ticket process for [Respondus Technical Support](#).
- 2) Contact your teacher.
~ and/or ~
- 3) Submit a [Support Ticket](#) | Click on the **Submit a Ticket >>>** Scroll down to **AsULearn Request >>>** Fill out the form and in the **AsULearn Support Type** select **3rd party integration with AsULearn**.

For additional information, please read: [The Student Quick Start Guide \(PDF\)](#).

Related Articles

- [Alternative File Format Conversion Tool](#)
- [Assignment: Submit Google Doc](#)
- [Assignment: Submitting a Turnitin Assignment](#)
- [AsULearn Mobile App](#)
- [AsULearn Student Support](#)
- [AsULearn-Syllabus Chatbot](#)
- [Course Access and Retention](#)
- [Courses Not Visible](#)
- [I can't see my grades in AsULearn.](#)
- [Log In Troubleshooting](#)
- [Navigating AsULearn](#)
- [Pages Not Displaying Correctly](#)
- [Profile Settings in AsULearn](#)
- [Quiz: Best Practices for Students](#)
- [Safe Exam Browser \(SEB\) - Student Guide](#)
- [Voice Thread: Submitting Assignments](#)
- [Zoom Web Conferencing: Classes, Group Work, Collaboration](#)
- [Zoom: Breakout Rooms - Troubleshooting](#)

Search Knowledge Base

Submit a Service Request

We value your feedback! Click [HERE](#) to suggest updates to an existing article, request a new article, or submit an idea.